



The wireless diagnosis solution of the ELLIPS lightning rod

Requirement:

An outside protection against lightning by means of a lightning rod must be checked every year and after every lightning strike so as to ensure its good working order. NFC 17 102 – December 2001



The whole range of ELLIPS lightning rods offers a testing and transfer of information possibility without any physical link. This function is named **ELLIPS CONTACT AIR**. Indeed, an **ELLIPS CONTACT AIR** emitter can be optionally added on each ELLIPS lightning rod.

The **ELLIPS CONTACT AIR** option was developed in the same spirit as the ELLIPS lightning rod. Efficiency, reliability, as well as convenience and aesthetic have been the mainsprings of our researches.



The **ELLIPS CONTACT AIR** emitter constantly indicates the working state of the ELLIPS lightning rod as well as its communication reliability. It communicates in real time and registers a warning when a lightning strike is detected by the ELLIPS lightning rod.

ELLIPS CONTACT AIR is supplied by a photovoltaic cell that guarantees its autonomy. The technology of this photovoltaic cell allows to obtain a charging of the communication system even in weak luminosity conditions and to ensure a twenty-four-hours-a-day communication. Communication is possible within a minimum range of 30 meters and a maximum range of 300m (depending on the receiver, its positioning and its environment). **ELLIPS CONTACT AIR** can be added at the initial assembly or during the life length of the installation, at any time, very easily and rapidly, without any effect on the efficiency of the protection.

In keeping with the requirements of each user and the sensitivity of the site to protect, we conceived two kinds of receivers.



Nomadic receiver
ELLIPS CONTACT AIR USB (E.C.A.U.)

E.C.A.U. is connected to a Windows⁽¹⁾ portable PC and communicates with the whole of ELLIPS lightning rods equipped with an ELLIPS CONTACT unit. Information is collected on demand.



Sedentary receiver
ELLIPS CONTACT AIR BOX (E.C.A.B.)

E.C.A.B. constantly communicates with the ELLIPS lightning rods. Customizable by remote control by our teams and connected to the internet or a GSM network, E.C.A.B. communicate the lightning warnings in real time. A photovoltaic supply is optionally available for an all-autonomous working.



ELLIPS CONTACT AIR SOFT is the software developed by LPS France that locally collects information from ELLIPS lightning rod(s).

Device serial number	Reception time	Emission level	State	Connection	Protection
008943DE	11/06/2012 12:11:36	-45 dBm	Not connected	-	-
00894419	11/06/2012 12:11:14	-48 dBm	Connected	Shooting	-
00894351	11/06/2012 12:11:01	-52 dBm	Not connected	-	-
00815501	11/06/2012 12:11:00	-45 dBm	Connected	Operational	-
00894390	11/06/2012 12:10:40	-52 dBm	Not connected	-	-
008943DE	11/06/2012 12:09:50	-45 dBm	Not connected	-	-
00894419	11/06/2012 12:09:28	-48 dBm	Connected	Operational	-
00894351	11/06/2012 12:09:16	-51 dBm	Not connected	-	-
00815501	11/06/2012 12:09:15	-45 dBm	Connected	Operational	-

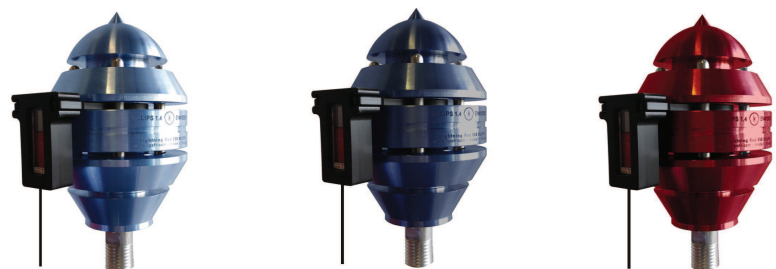
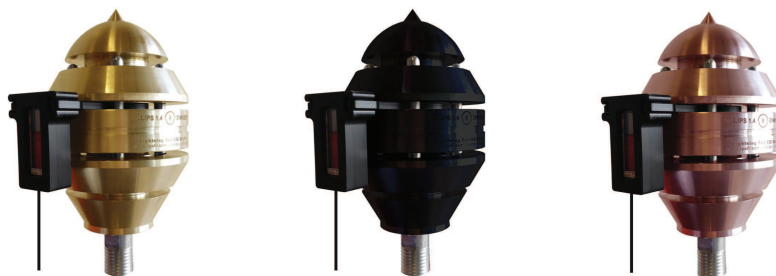




www.lpsfr.com

ELLIPS CONTACT AIR SOFT sends its results – in all cases – toward our dedicated online data base. The latter, which is accessible at any time and communicates toward the preferential interlocutors of each installation (as wished: manufacturer, distributor, fitter, customer...) allows to follow the lightning rods at any time. ELLIPS lightning rods thus become real tools for the protection and prevention of lightning-related risks.

RANGE OF COLORS AVAILABLE OPTIONALLY



L.P.S. FRANCE
 GROUPE CEMASO SAS
 BP 80055 - F33460 MARGAUX
 Tel: +33 (0) 557 226 577
 Fax: +33 (0) 517 476 503
 SIRET: 521876433 RCS BDX